

SECTION THREE

SUMMARY TABLES, MAPS AND CHARTS

3. SUMMARY TABLES, CHARTS AND MAPS

Table 3.1 Number of senior secondary schools (SSS) by type of education and region, 2005/2006

REGION	NUMBER OF SSS		
	Public	Private	Total
Ashanti	62	26	88
Brong Ahafo	50	10	60
Central	51	15	66
Eastern	57	14	71
Greater Accra	25	6	31
Northern	32	4	36
Upper East	20	2	22
Upper West	15	1	16
Volta	64	11	75
Western	36	5	41
Total	412	94	506

MAP 3.1a: NUMBER OF PUBLIC SENIOR SECONDARY SCHOOLS BY REGION, 2005/2006

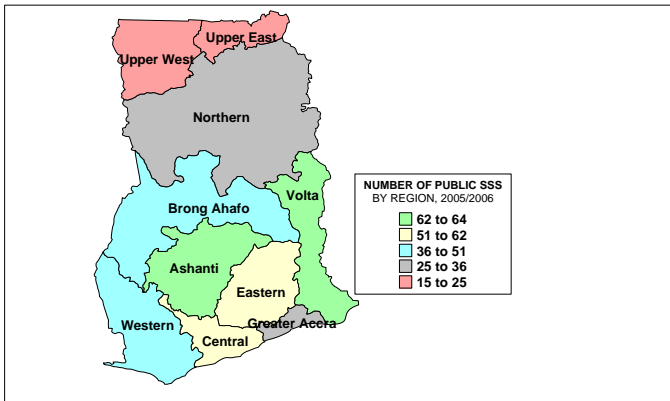
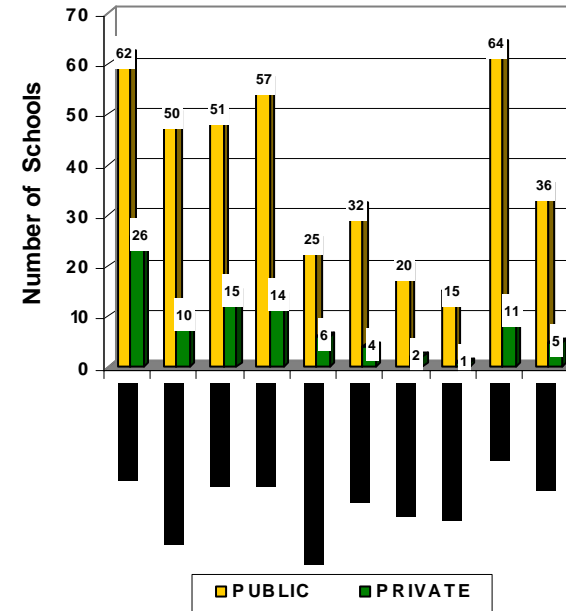


Chart 3.1 NUMBER OF SENIOR SECONDARY SCHOOLS BY TYPE OF EDUCATION AND REGION 2005-2006



MAP 3.1b: NUMBER OF PRIVATE SENIOR SECONDARY SCHOOLS BY REGION, 2005/2006

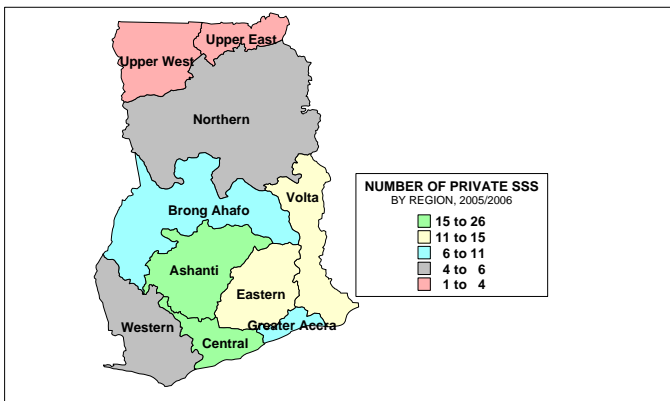
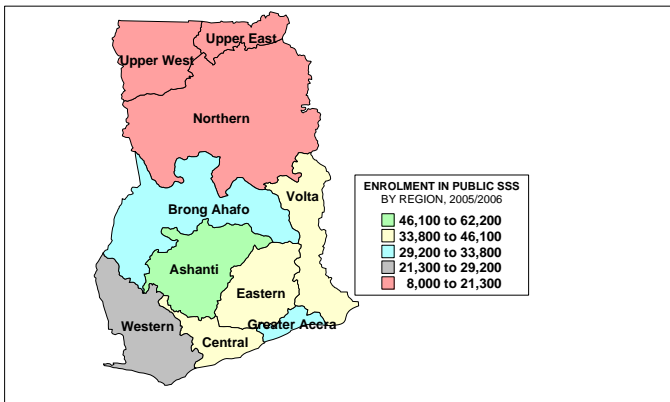


Table 3.2 Enrolment in senior secondary schools (SSS) by type of education, region and sex, 2005/2006

REGION	ENROLMENT IN SSS								
	PUBLIC			PRIVATE			TOTAL		
	Boys	Girls	Total	Boys	Girls	Total	Boys	Girls	Total
Ashanti	33,982	28,159	62,141	3,691	4,398	8,089	37,673	32,557	70,230
Brong Ahafo	18,982	13,150	32,132	972	1,085	2,057	19,954	14,235	34,189
Central	25,433	20,657	46,090	1,511	1,840	3,351	26,944	22,497	49,441
Eastern	24,523	20,161	44,684	2,340	1,994	4,334	26,863	22,155	49,018
Greater Accra	17,362	11,862	29,224	849	853	1,702	18,211	12,715	30,926
Northern	14,978	6,316	21,294	535	861	1,396	15,513	7,177	22,690
Upper East	7,139	4,035	11,174	22	961	983	7,161	4,996	12,157
Upper West	4,946	3,142	8,088	121	-	121	5,067	3,142	8,209
Volta	19,963	13,859	33,822	382	471	853	20,345	14,330	34,675
Western	14,541	11,120	25,661	483	840	1,323	15,024	11,960	26,984
Total	181,849	132,461	314,310	10,906	13,303	24,209	192,755	145,764	338,519

MAP 3.2a: ENROLMENT IN PUBLIC SENIOR SECONDARY SCHOOLS BY REGION, 2005/2006



MAP 3.2b: ENROLMENT IN PRIVATE SENIOR SECONDARY SCHOOLS BY REGION, 2005/2006

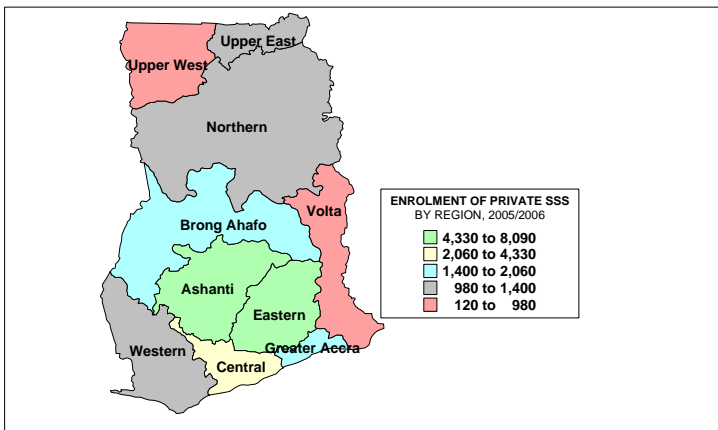


Chart 3.2 SENIOR SECONDARY SCHOOLS ENROLMENT BY TYPE OF EDUCATION AND REGION 2005-2006

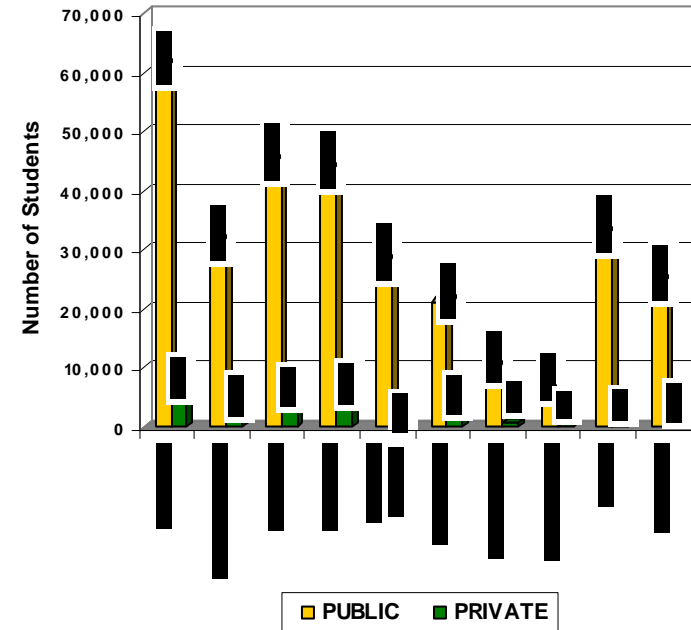


Table 3.3 Gross Enrolment Ratios in senior secondary schools (SSS) by region and sex, 2005/2006

REGION	GROSS ENROLMENT RATIOS IN SSS								
	BOYS			GIRLS			TOTAL		
	Pop. 15-17yrs	Enrolment	GER	Pop. 15-17yrs	Enrolment	GER	Pop. 15-17yrs	Enrolment	GER
Ashanti	123,373	37,673	30.5	129,927	32,557	25.1	253,300	70,230	27.7
Brong Ahafo	66,149	19,954	30.2	62,647	14,235	22.7	128,796	34,189	26.5
Central	54,680	26,944	49.3	48,276	22,497	46.6	102,956	49,441	48.0
Eastern	70,721	26,863	38.0	64,034	22,155	34.6	134,755	49,018	36.4
Greater Accra	119,375	18,211	15.3	132,429	12,715	9.6	251,804	30,926	12.3
Northern	63,985	15,513	24.2	54,101	7,177	13.3	118,086	22,690	19.2
Upper East	29,584	7,161	24.2	25,590	4,996	19.5	55,174	12,157	22.0
Upper West	19,659	5,067	25.8	16,967	3,142	18.5	36,626	8,209	22.4
Volta	60,265	20,345	33.8	52,224	14,330	27.4	112,489	34,675	30.8
Western	66,368	15,024	22.6	65,712	11,960	18.2	132,080	26,984	20.4
Total	674,159	192,755	28.6	651,907	145,764	22.4	1,326,066	338,519	25.5

MAP 3.3a: GROSS ENROLMENT RATIO OF SENIOR SECONDARY SCHOOLS BY REGION, 2005/2006

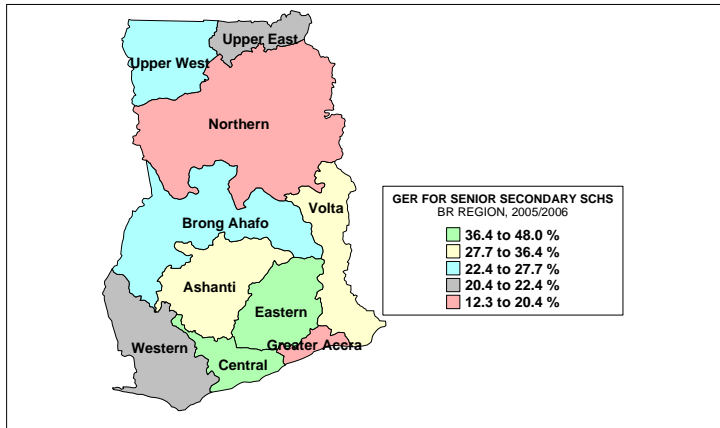
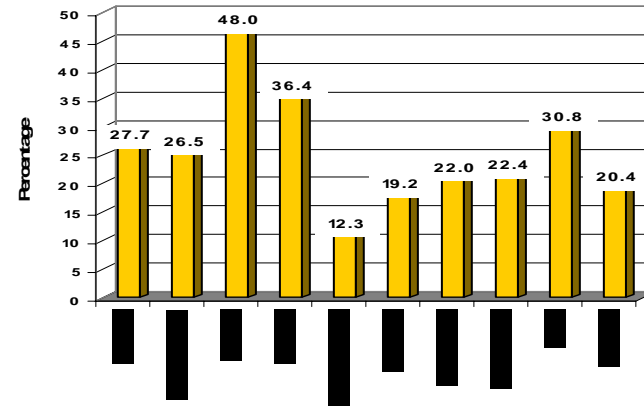


Chart 3.3a GROSS ENROLMENT RATIO IN SENIOR SECONDARY SCHOOLS BY REGION 2005/2006



MAP 3.3b: GROSS ENROLMENT RATIO FOR SENIOR SECONDARY SCHOOL GIRLS BY REGION, 2005/2006

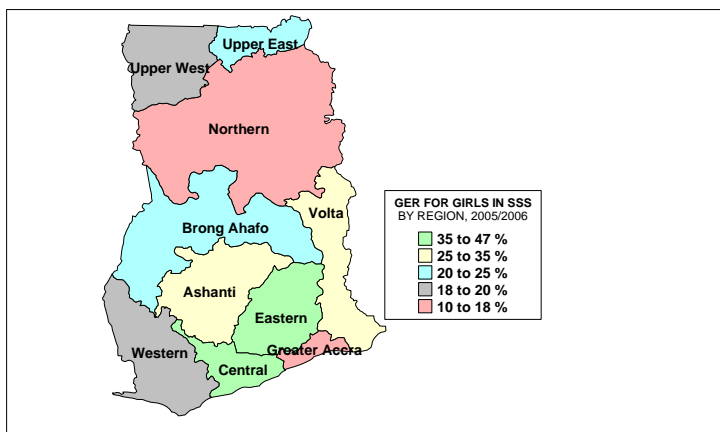


Chart 3.3b GROSS ENROLMENT RATIO FOR GIRLS IN SENIOR SECONDARY SCHOOLS BY REGION 2005-2006

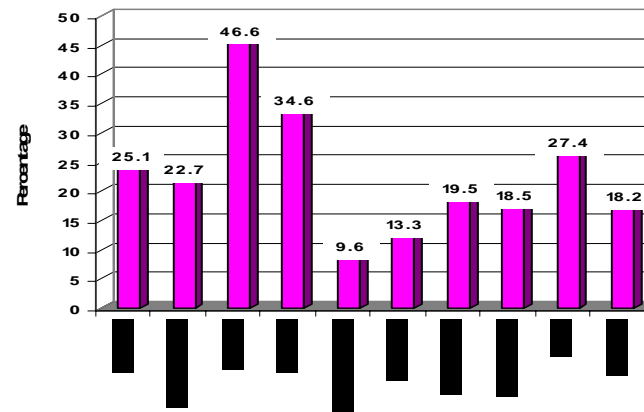
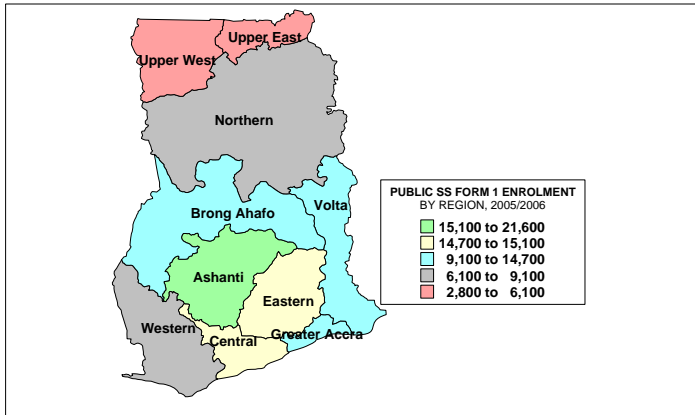


Table 3.4 Enrolment in SS1 by type of education, region and sex, 2005/2006

REGION	ENROLMENT IN SS1								
	PUBLIC			PRIVATE			TOTAL		
	Boys	Girls	Total	Boys	Girls	Total	Boys	Girls	Total
Ashanti	11,991	9,590	21,581	1,682	1,983	3,665	13,673	11,573	25,246
Brong Ahafo	6,445	4,744	11,189	523	560	1,083	6,968	5,304	12,272
Central	7,968	6,755	14,723	832	999	1,831	8,800	7,754	16,554
Eastern	8,447	6,613	15,060	1,176	1,055	2,231	9,623	7,668	17,291
Greater Accra	5,493	3,607	9,100	304	315	619	5,797	3,922	9,719
Northern	4,458	1,663	6,121	228	449	677	4,686	2,112	6,798
Upper East	2,430	1,262	3,692	22	355	377	2,452	1,617	4,069
Upper West	1,726	1,127	2,853	40	-	40	1,766	1,127	2,893
Volta	6,585	4,608	11,193	235	312	547	6,820	4,920	11,740
Western	4,799	3,543	8,342	235	380	615	5,034	3,923	8,957
Total	60,342	43,512	103,854	5,277	6,408	11,685	65,619	49,920	115,539

MAP 3.4a: ENROLMENT IN PUBLIC SENIOR SECONDARY FORM ONE BY REGION, 2005/2006



MAP 3.4b: ENROLMENT IN PRIVATE SENIOR SECONDARY FORM ONE BY REGION, 2005/2006

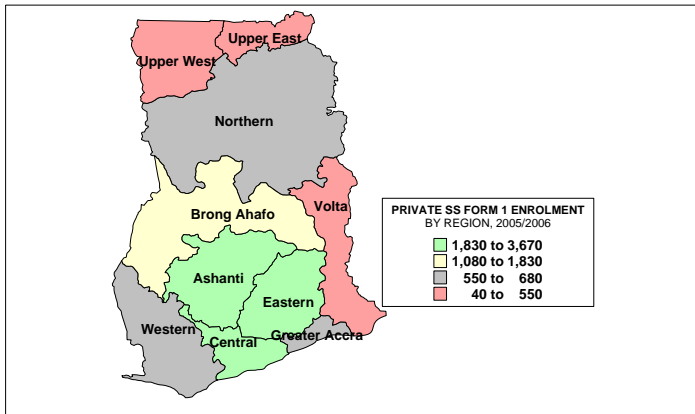


Chart 3.4 ENROLMENT IN SS ONE BY TYPE OF EDUCATION AND REGION 2005-2006

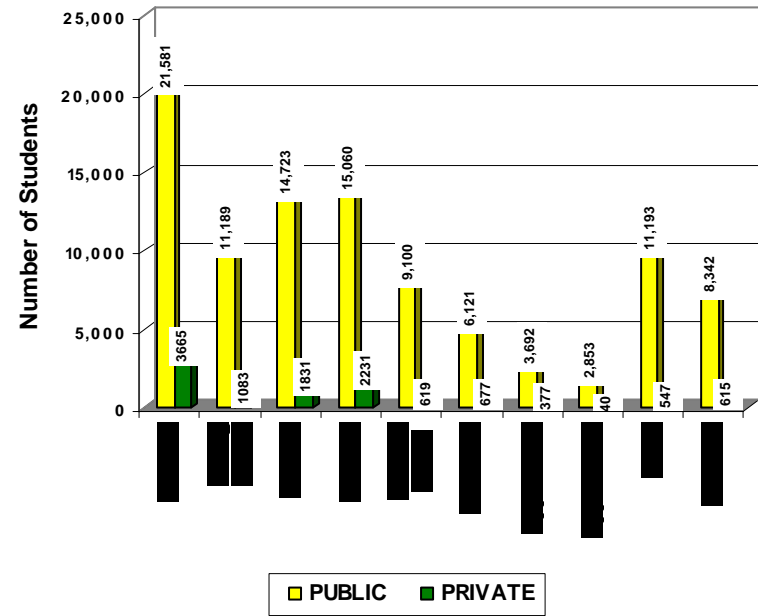
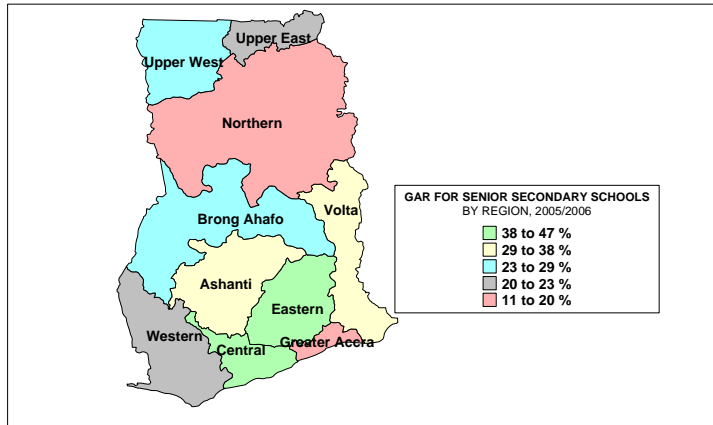


Table 3.5 Gross Admission Ratios (GARs) in senior secondary schools (SSS) by region and sex, 2005/2006

REGION	GROSS ADMISSION RATIOS (GAR) IN SSS								
	BOYS			GIRLS			TOTAL		
	Pop. 15yrs	Enrolment	GAR	Pop. 15yrs	Enrolment	GAR	Pop. 15yrs	Enrolment	GAR
Ashanti	42,267	13,673	32.3	44,515	11,573	26.0	86,782	25,246	29.1
Brong Ahafo	22,663	6,968	30.7	21,464	5,304	24.7	44,127	12,272	27.8
Central	18,733	8,800	47.0	16,540	7,754	46.9	35,273	16,554	46.9
Eastern	24,229	9,623	39.7	21,939	7,668	35.0	46,168	17,291	37.5
Greater Accra	40,898	5,797	14.2	45,372	3,922	8.6	86,270	9,719	11.3
Northern	21,921	4,686	21.4	18,536	2,112	11.4	40,457	6,798	16.8
Upper East	10,135	2,452	24.2	8,768	1,617	18.4	18,903	4,069	21.5
Upper West	6,735	1,766	26.2	5,813	1,127	19.4	12,548	2,893	23.1
Volta	20,647	6,820	33.0	17,893	4,920	27.5	38,540	11,740	30.5
Western	22,738	5,034	22.1	22,514	3,923	17.4	45,252	8,957	19.8
Total	230,966	65,619	28.4	223,354	49,920	22.4	454,320	115,539	25.4

MAP 3.5a: GROSS ADMISSION RATIO FOR SENIOR SECONDARY SCHOOLS BY REGION, 2005/2006



MAP 3.5b: GROSS ADMISSION RATIO FOR SENIOR SECONDARY SCHOOL GIRLS BY REGION, 2005/2006

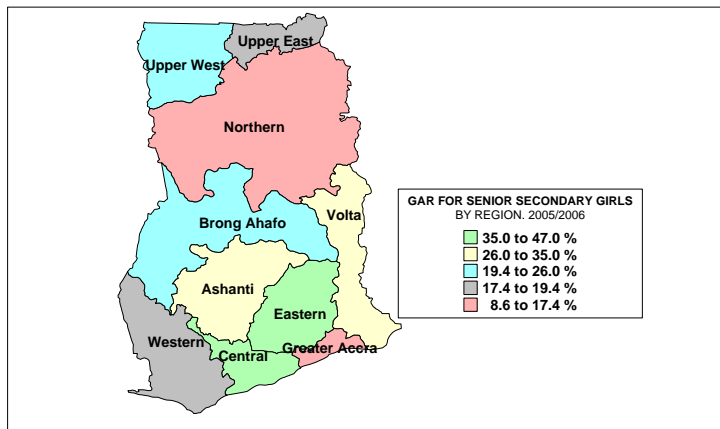


Chart 3.5a GROSS ADMISSION RATIO IN SENIOR SECONDARY SCHOOLS BY REGION 2005-2006

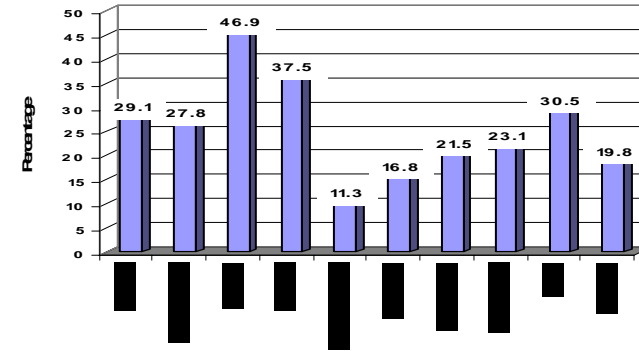


Chart 3.5b GROSS ADMISSION RATIO FOR GIRLS IN SENIOR SECONDARY SCHOOLS BY REGION 2005-2006

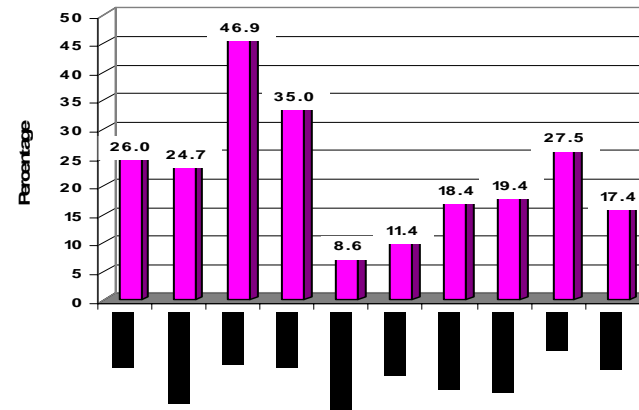
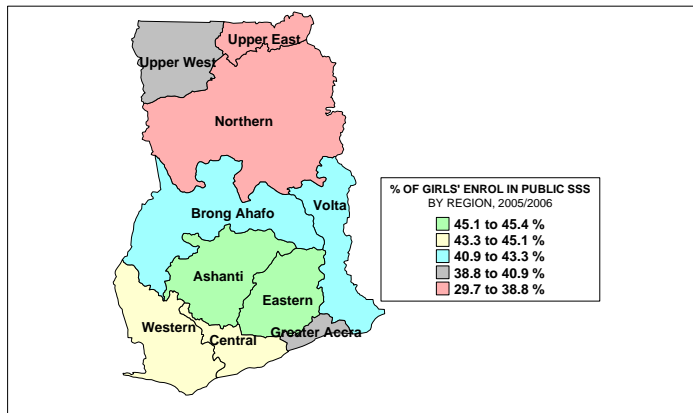


Table 3.6 Percentage of Girls Enrolment in senior secondary schools (SSS) by region and type of education, 2005/2006

REGION	PERCENTAGE OF GIRLS ENROLMENT IN SSS								
	PUBLIC			PRIVATE			TOTAL		
	Girls Enr.	Total Enr.	% Girls	Girls Enr.	Total Enr.	% Girls	Girls Enr.	Total Enr.	% Girls
Ashanti	28,159	62,141	45.3	4,398	8,089	54.4	32,557	70,230	46.4
Brong Ahafo	13,150	32,132	40.9	1,085	2,057	52.7	14,235	34,189	41.6
Central	20,657	46,090	44.8	1,840	3,351	54.9	22,497	49,441	45.5
Eastern	20,161	44,684	45.1	1,994	4,334	46.0	22,155	49,018	45.2
Greater Accra	11,862	29,224	40.6	853	1,702	50.1	12,715	30,926	41.1
Northern	6,316	21,294	29.7	861	1,396	61.7	7,177	22,690	31.6
Upper East	4,035	11,174	36.1	961	983	97.8	4,996	12,157	41.1
Upper West	3,142	8,088	38.8	-	121	-	3,142	8,209	38.3
Volta	13,859	33,822	41.0	471	853	55.2	14,330	34,675	41.3
Western	11,120	25,661	43.3	840	1,323	63.5	11,960	26,984	44.3
Total	132,461	314,310	42.1	13,303	24,209	55.0	145,764	338,519	43.1

MAP3.6a: PERCENTAGE OF GIRLS' ENROLMENT IN PUBLIC SENIOR SECONDARY SCHOOLS BY REGION, 2005/2006



MAP3.6b: PERCENTAGE OF GIRLS' ENROLMENT IN PRIVATE SENIOR SECONDARY SCHOOLS BY REGION, 2005/2006

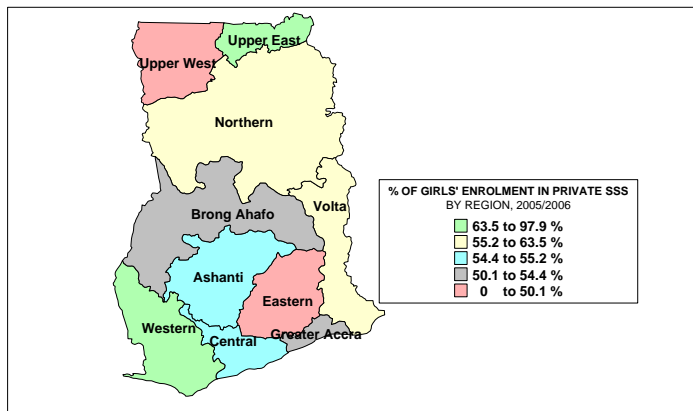


Chart 3.6a PERCENTAGE OF GIRLS IN PUBLIC SENIOR SECONDARY SCHOOLS BY REGION 2005-2006

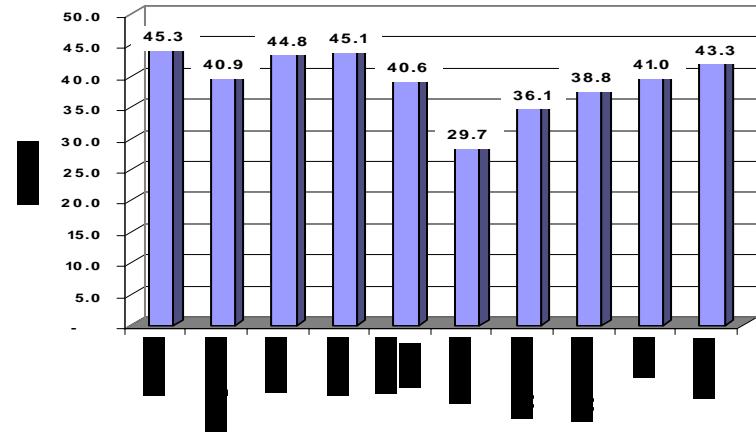


Chart 3.6b PERCENTAGE OF GIRLS IN PRIVATE SENIOR SECONDARY SCHOOLS BY REGION 2005-2006

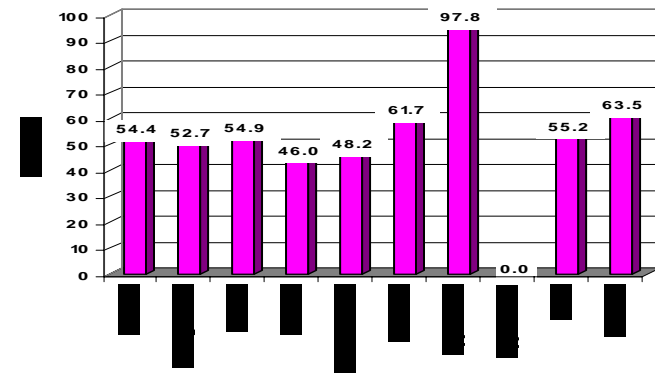
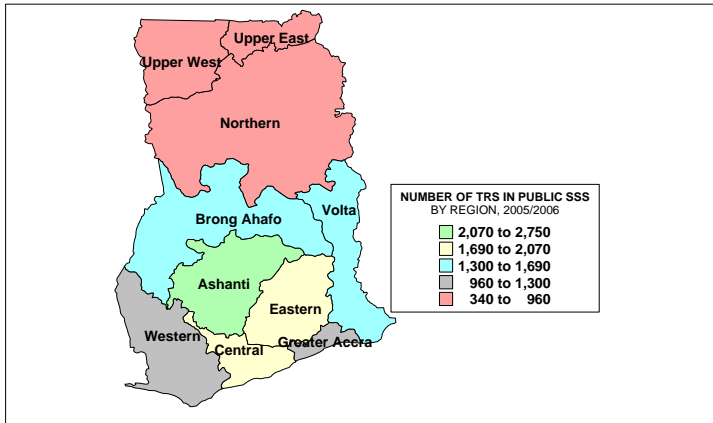


Table 3.7 Number of teachers in senior secondary schools by type of education and region, 2005/2006

REGION	NUMBER OF TEACHERS			NUMBER OF TRAINED TEACHERS		
	Public	Private	Total	Public	Private	Total
Ashanti	2,750	517	3,267	2,320	270	2,590
Brong Ahafo	1,450	139	1,589	1,079	104	1,183
Central	2,065	224	2,289	1,714	129	1,843
Eastern	1,970	258	2,228	1,588	146	1,734
Greater Accra	1,296	76	1,372	1,098	26	1,124
Northern	955	67	1,022	673	25	698
Upper East	506	43	549	392	42	434
Upper West	343	14	357	238	9	247
Volta	1,687	122	1,809	1,273	75	1,348
Western	1,113	63	1,176	924	25	949
Total	14,135	1,523	15,658	11,299	851	12,150

MAP3.7a: NUMBER OF TEACHERS IN PUBLIC SENIOR SECONDARY SCHOOLS BY REGION, 2005/2006



MAP3.7b: NUMBER OF TEACHERS IN PRIVATE SENIOR SECONDARY SCHOOLS BY REGION, 2005/2006

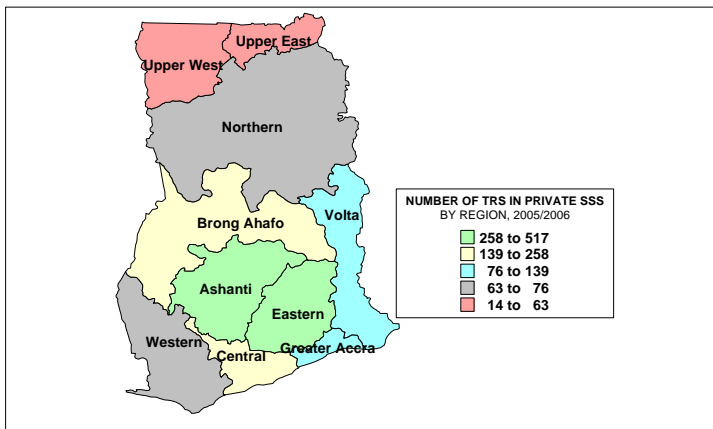


Chart 3.7 NUMBER OF TEACHERS IN SENIOR SECONDARY SCHOOLS BY TYPE OF EDUCATION AND REGION 2005-2006

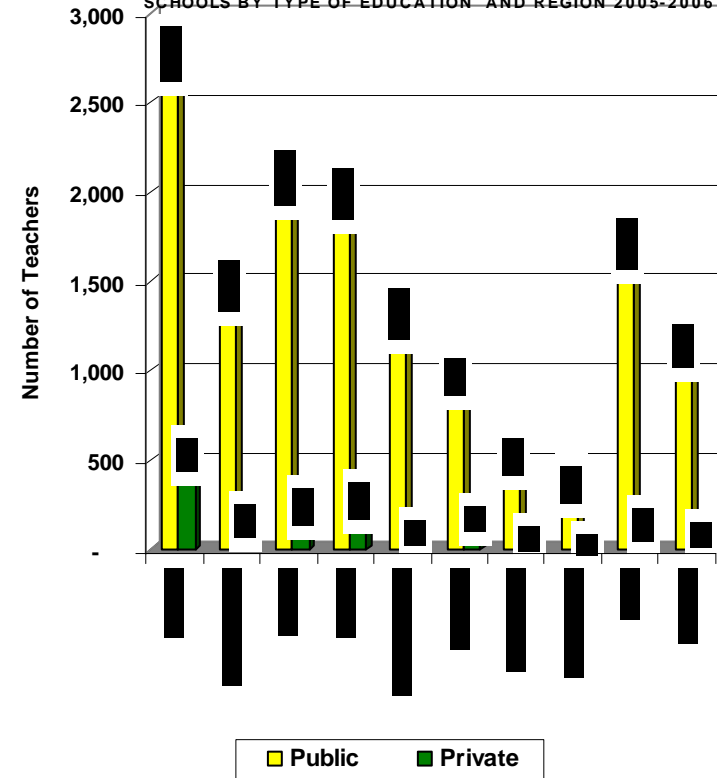
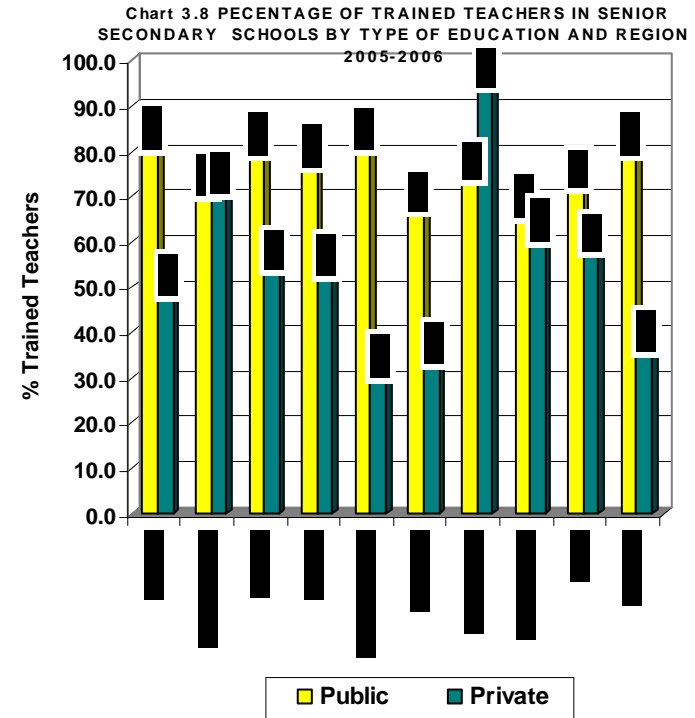
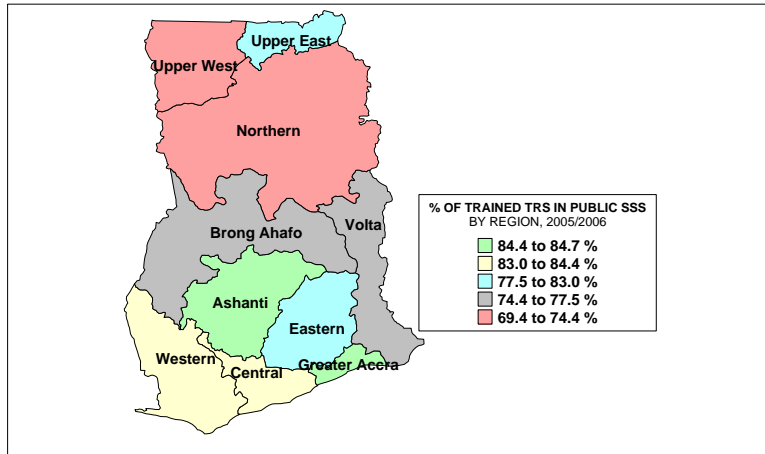


Table 3.8 Percentage of trained teachers in senior secondary schools by type of education and region, 2005/2006

REGION	PERCENTAGE OF TRAINED TEACHERS		
	Public	Private	Total
Ashanti	84.4	52.2	79.3
Brong Ahafo	74.4	74.8	74.4
Central	83.0	57.6	80.5
Eastern	80.6	56.6	77.8
Greater Accra	84.7	34.2	81.9
Northern	70.5	37.3	68.3
Upper East	77.5	97.7	79.1
Upper West	69.4	64.3	69.2
Volta	75.5	61.5	74.5
Western	83.0	39.7	80.7
Total	79.9	55.9	77.6

MAP 3.8a: PERCENTAGE OF TRAINED TEACHERS IN PUBLIC SENIOR SECONDARY SCHOOLS BY REGION, 2005/2006



MAP 3.8b: PERCENTAGE OF TRAINED TEACHERS IN PRIVATE SENIOR SECONDARY SCHOOLS BY REGION, 2005/2006

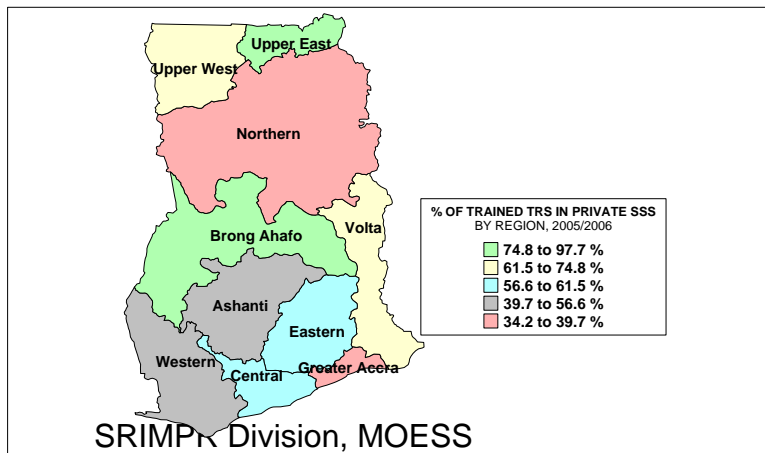


Table 3.9 Student-Teacher Ratios in senior secondary schools by type of education and region, 2005/2006

REGION	STUDENT/TEACHER RATIOS								
	PUBLIC			PRIVATE			TOTAL		
	Enrol.	Teachers	S/T Ratio	Enrol.	Teachers	S/T Ratio	Enrol.	Teachers	S/T Ratio
Ashanti	62,141	2,750	22.6	8,089	517	15.6	70,230	3,267	21.5
Brong Ahafo	32,132	1,450	22.2	2,057	139	14.8	34,189	1,589	21.5
Central	46,090	2,065	22.3	3,351	224	15.0	49,441	2,289	21.6
Eastern	44,684	1,970	22.7	4,334	258	16.8	49,018	2,228	22.0
Greater Accra	29,224	1,296	22.5	1,702	76	22.4	30,926	1,372	22.5
Northern	21,294	955	22.3	1,396	67	20.8	22,690	1,022	22.2
Upper East	11,174	506	22.1	983	43	22.9	12,157	549	22.1
Upper West	8,088	343	23.6	121	14	8.6	8,209	357	23.0
Volta	33,822	1,687	20.0	853	122	7.0	34,675	1,809	19.2
Western	25,661	1,113	23.1	1,323	63	21.0	26,984	1,176	22.9
Total	314,310	14,135	22.2	24,209	1,523	15.9	338,519	15,658	21.6

MAP 3.9a: STUDENT-TEACHER RATIO IN PUBLIC SENIOR SECONDARY SCHOOLS BY REGION, 2005/2006

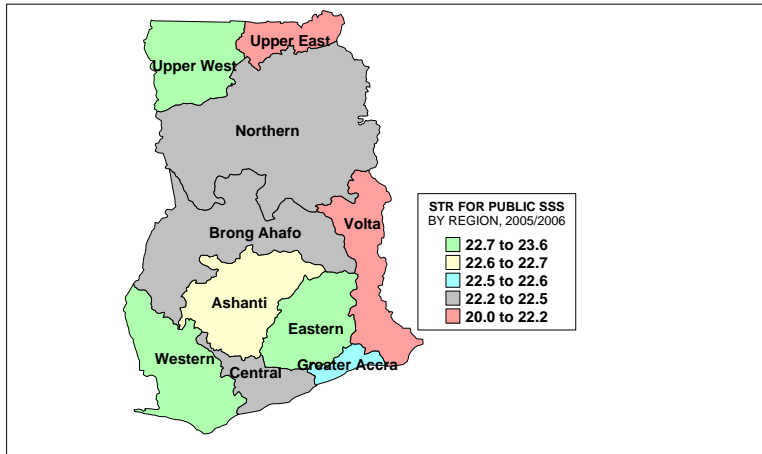
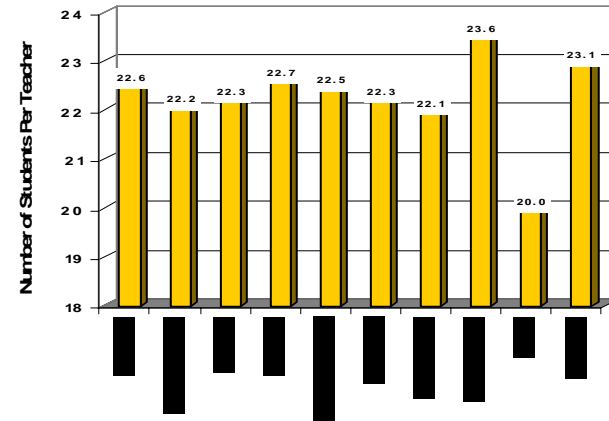


Chart 3.9a STUDENT/TEACHER RATIO IN PUBLIC SENIOR SECONDARY SCHOOLS BY REGION 2005-2006



MAP 3.9b: STUDENT-TEACHER RATIO IN PRIVATE SENIOR SECONDARY SCHOOLS BY REGION, 2005/2006

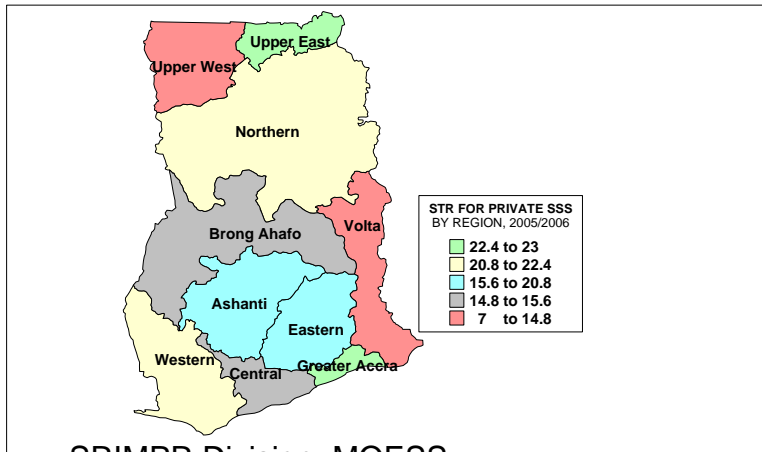


Chart 3.9b STUDENT/TEACHER RATIO IN PRIVATE SENIOR SECONDARY SCHOOLS BY REGION 2005-2006

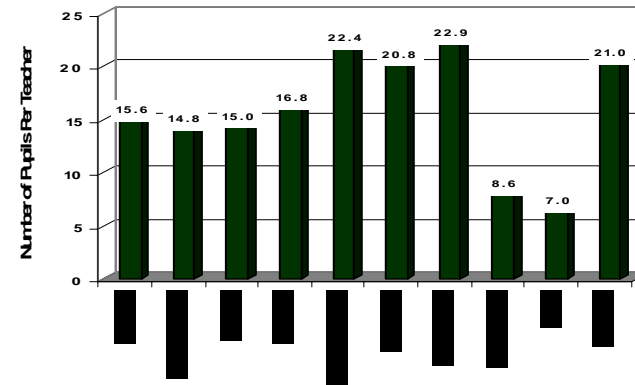
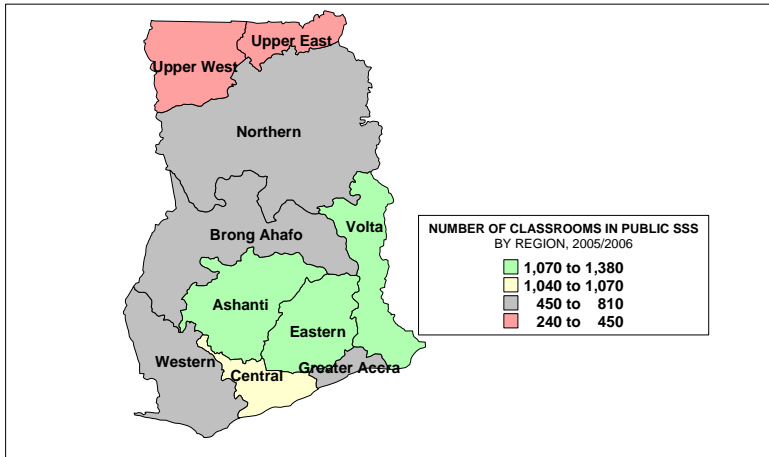


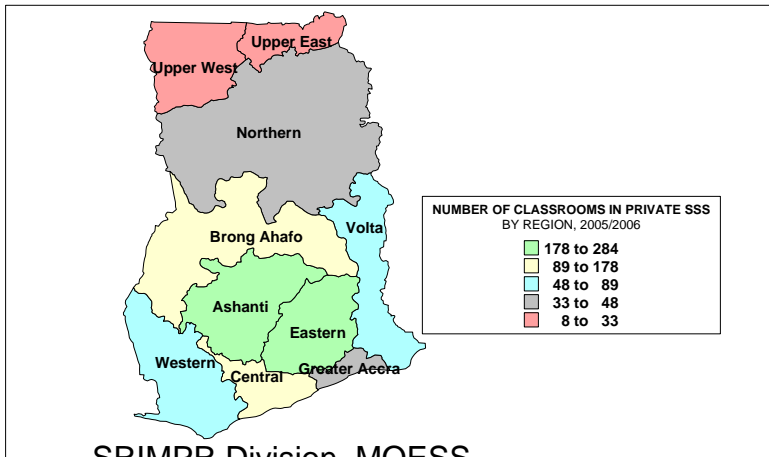
Table 3.10 Number of classrooms in senior secondary schools by type of education and region, 2005/2006

REGION	NUMBER OF CLASSROOMS IN SSS								
	PUBLIC			PRIVATE			TOTAL		
	Permanent	Temporary	Total	Permanent	Temporary	Total	Permanent	Temporary	Total
Ashanti	1,243	133	1,376	277	7	284	1,520	140	1,660
Brong Ahafo	757	48	805	78	11	89	835	59	894
Central	932	112	1,044	131	10	141	1,063	122	1,185
Eastern	972	102	1,074	154	24	178	1,126	126	1,252
Greater Accra	618	49	667	39	5	44	657	54	711
Northern	423	31	454	28	5	33	451	36	487
Upper East	262	23	285	23	-	23	285	23	308
Upper West	234	13	247	8	-	8	242	13	255
Volta	950	133	1,083	57	7	64	1,007	140	1,147
Western	602	64	666	42	6	48	644	70	714
Total	6,993	708	7,701	837	75	912	7,830	783	8,613

MAP 3.10a: NUMBER OF CLASSROOMS IN PUBLIC SENIOR SECONDARY SCHOOLS BY REGION, 2005/2006



MAP 3.10b: NUMBER OF CLASSROOMS IN PRIVATE SENIOR SECONDARY SCHOOLS BY REGION, 2005/2006



SRIMPR Division, MOESS

Chart 3.10 NUMBER OF CLASSROOMS IN SENIOR SECONDARY SCHOOLS BY TYPE OF EDUCATION AND REGION 2005-2006

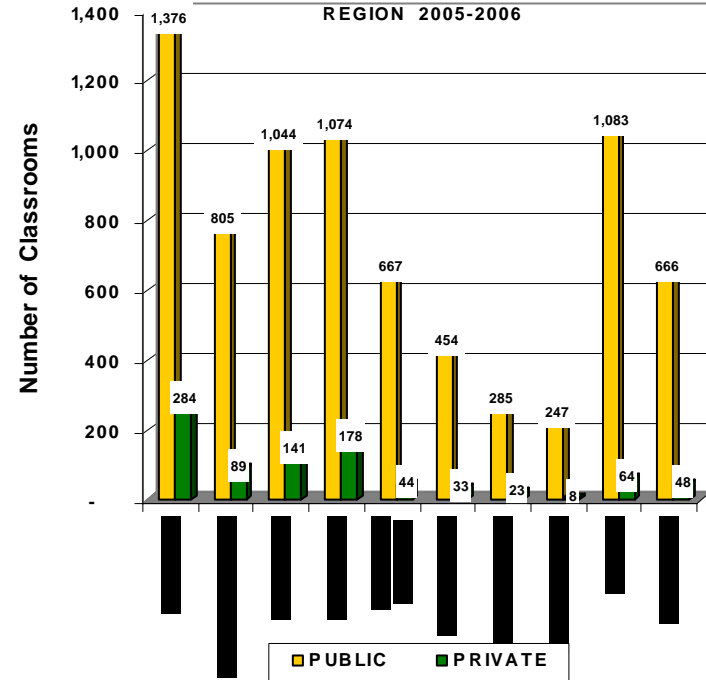
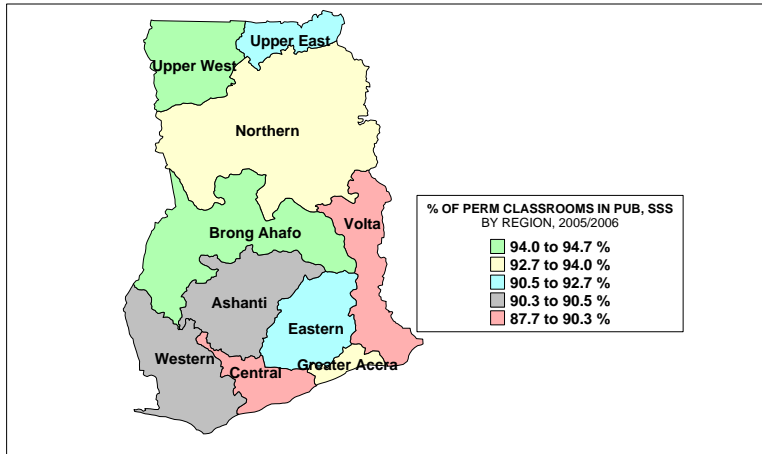


Table 3.11 Percentage of permanent classrooms in senior secondary schools by type of education and region, 2005/2006

REGION	PERCENTAGE OF PERMANENT CLASSROOMS IN SSS		
	Public	Private	Total
Ashanti	90.3	97.5	91.6
Brong Ahafo	94.0	87.6	93.4
Central	89.3	92.9	89.7
Eastern	90.5	86.5	89.9
Greater Accra	92.7	88.6	92.4
Northern	93.2	84.8	92.6
Upper East	91.9	100.0	92.5
Upper West	94.7	100.0	94.9
Volta	87.7	89.1	87.8
Western	90.4	87.5	90.2
Total	90.8	91.8	90.9

MAP 3.11a: PERCENTAGE OF PERMANENT CLASSROOMS IN PUBLIC SENIOR SECONDARY SCHOOLS BY REGION, 2005/2006



MAP 3.11b: PERCENTAGE OF PERMANENT CLASSROOMS IN PRIVATE SENIOR SECONDARY SCHOOLS BY REGION, 2005/2006

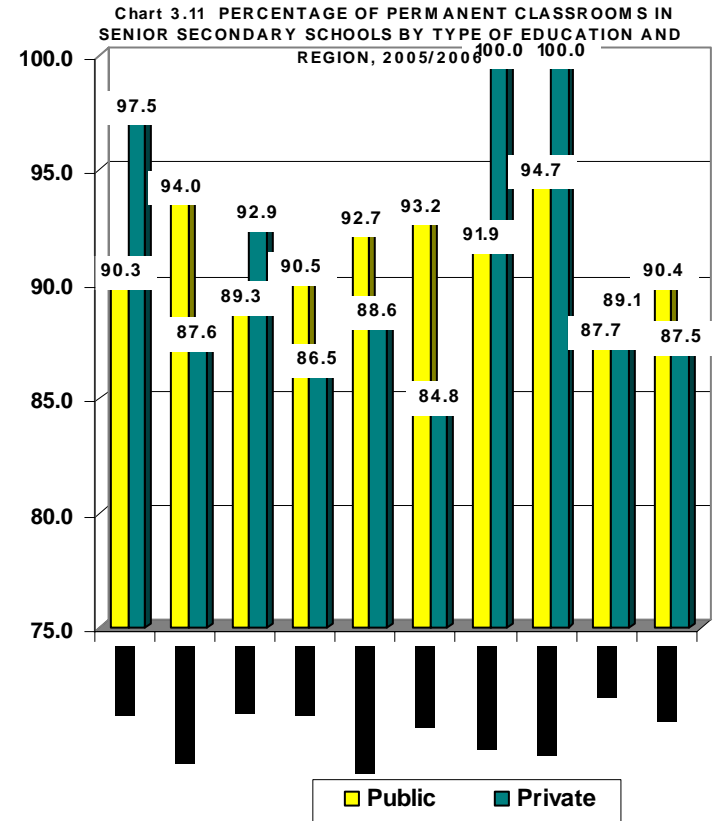
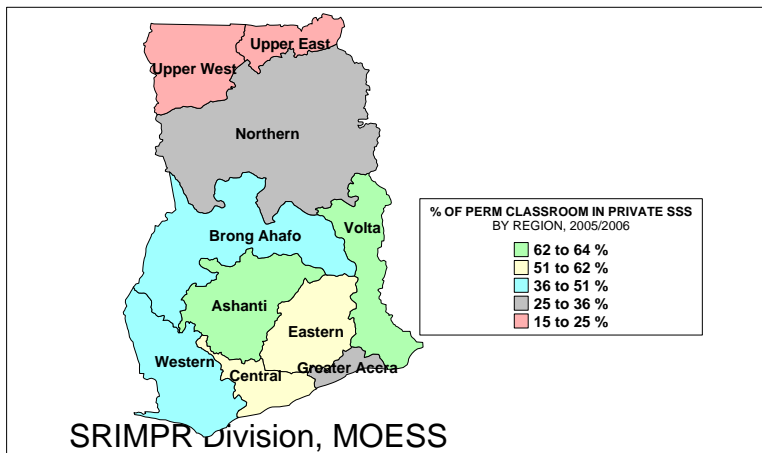


Table 3.12 Condition of permanent classrooms (in absolute terms) in senior secondary schools by type of education, region, 2005/2006

REGION	CONDITION OF PERMANENT CLASSROOMS IN SSS								
	PUBLIC			PRIVATE			TOTAL		
	Total	Needs Major Repairs	Needs Minor Repairs	Total	Needs Major Repairs	Needs Minor Repairs	Total	Needs Major Repairs	Needs Minor Repairs
Ashanti	1,243	371	263	277	53	7	1,520	424	270
Brong Ahafo	757	258	186	78	15	4	835	273	190
Central	932	347	218	131	17	13	1,063	364	231
Eastern	972	377	262	154	27	7	1,126	404	269
Greater Accra	618	274	118	39	7	0	657	281	118
Northern	423	133	151	28	5	0	451	138	151
Upper East	262	60	74	23	0	9	285	60	83
Upper West	234	94	38	8	8	0	242	102	38
Volta	950	366	281	57	12	6	1,007	378	287
Western	602	296	128	42	6	3	644	302	131
Total	6,993	2,576	1,719	837	150	49	7,830	2,726	1,768

MAP 3.12a: NUMBER OF PERMANENT CLASSROOMS OF PUBLIC SENIOR SECONDARY SCHOOLS BY REGION, 2005/2006

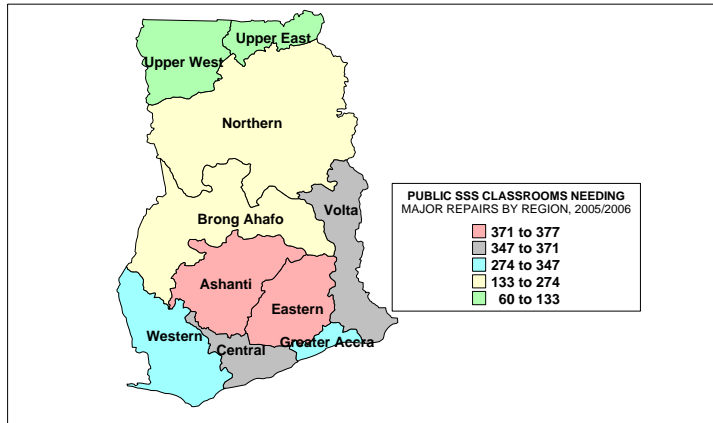
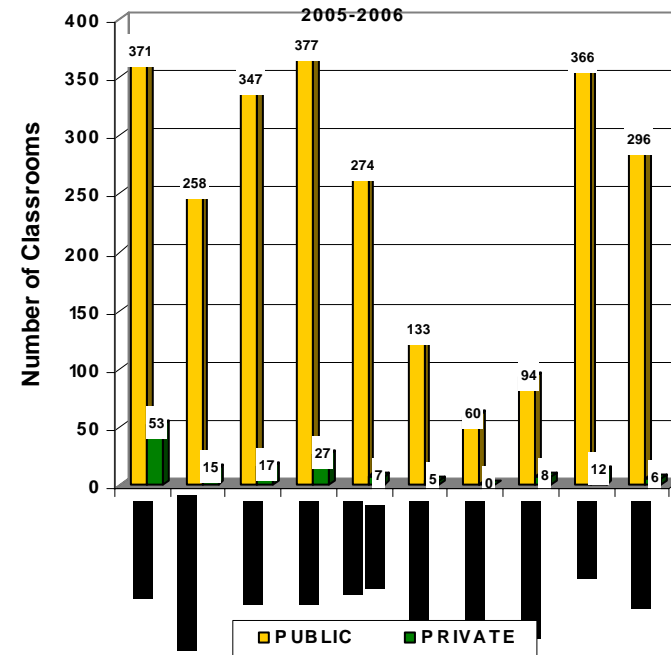


Chart 3.12 NUMBER OF PERMANENT CLASSROOMS IN SSS NEEDING MAJOR REPAIRS BY TYPE OF EDUCATION AND REGION



MAP 3.12b: NUMBER OF PERMANENT CLASSROOMS OF PRIVATE SENIOR SECONDARY SCHOOLS BY REGION, 2005/2006

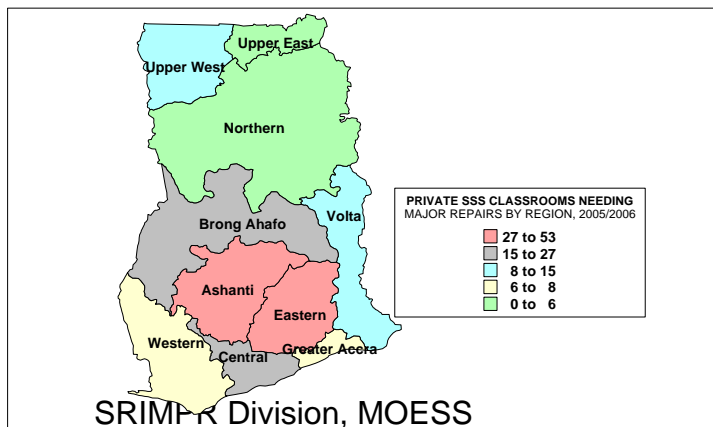
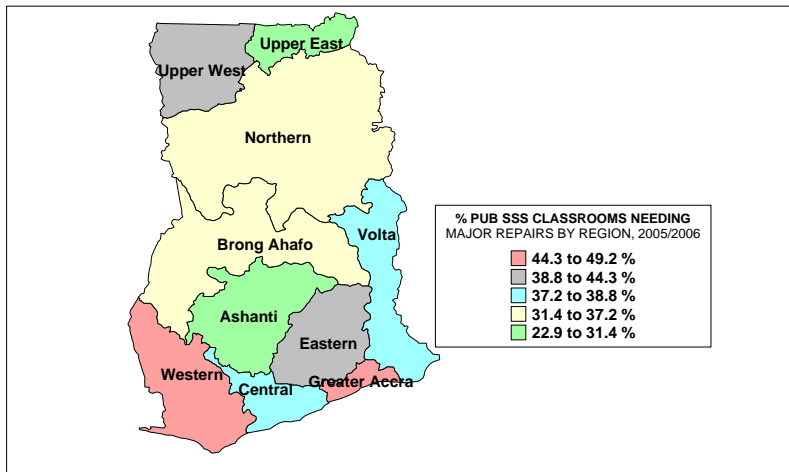


Table 3.13 Condition of permanent classrooms (in percentages) in senior secondary schools by type of education, region, 2005/2006

REGION	CONDITION OF PERMANENT CLASSROOMS IN SSS								
	PUBLIC			PRIVATE			TOTAL		
	Total	Needs Major Repairs	Needs Minor Repairs	Total	Needs Major Repairs	Needs Minor Repairs	Total	Needs Major Repairs	Needs Minor Repairs
Ashanti	100.0	29.8	21.2	100.0	19.1	2.5	100.0	27.9	17.8
Brong Ahafo	100.0	34.1	24.6	100.0	19.2	5.1	100.0	32.7	22.8
Central	100.0	37.2	23.4	100.0	13.0	9.9	100.0	34.2	21.7
Eastern	100.0	38.8	27.0	100.0	17.5	4.5	100.0	35.9	23.9
Greater Accra	100.0	44.3	19.1	100.0	17.9	0.0	100.0	42.8	18.0
Northern	100.0	31.4	35.7	100.0	17.9	0.0	100.0	30.6	33.5
Upper East	100.0	22.9	28.2	100.0	0.0	39.1	100.0	21.1	29.1
Upper West	100.0	40.2	16.2	100.0	100.0	0.0	100.0	42.1	15.7
Volta	100.0	38.5	29.6	100.0	21.1	10.5	100.0	37.5	28.5
Western	100.0	49.2	21.3	100.0	14.3	7.1	100.0	46.9	20.3
Total	100.0	36.8	24.6	100.0	17.9	5.9	100.0	34.8	22.6

MAP 3.13a: PERCENTAGE OF CLASSROOMS IN PUBLIC SENIOR SECONDARY SCHOOLS THAT NEED MAJOR REPAIRS BY REGION, 2005/2006



MAP 3.13b: PERCENTAGE OF CLASSROOMS IN PRIVATE SENIOR SECONDARY SCHOOLS THAT NEED MAJOR REPAIRS BY REGION, 2005/2006

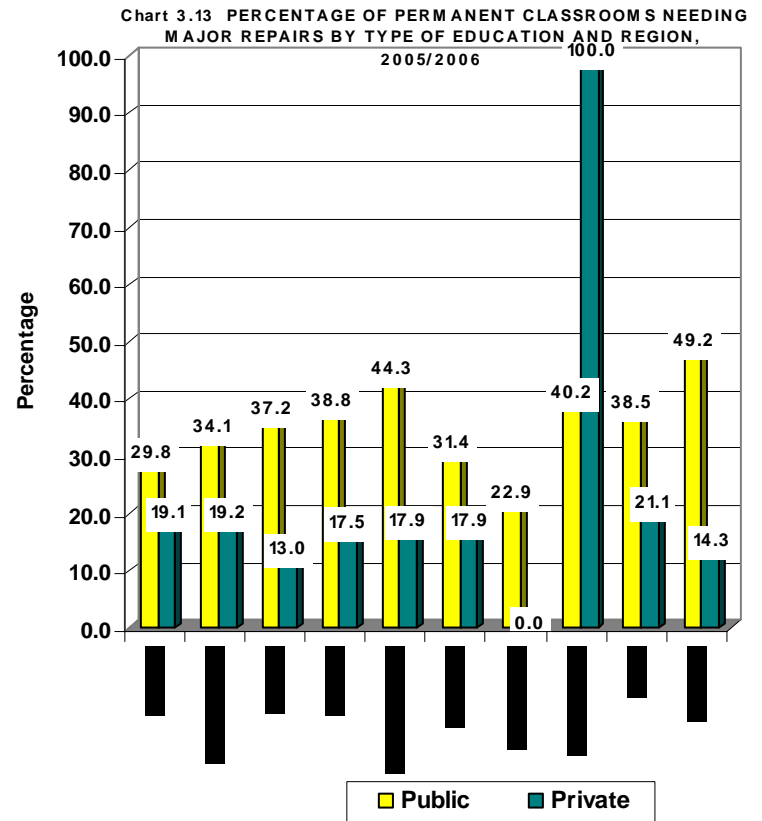
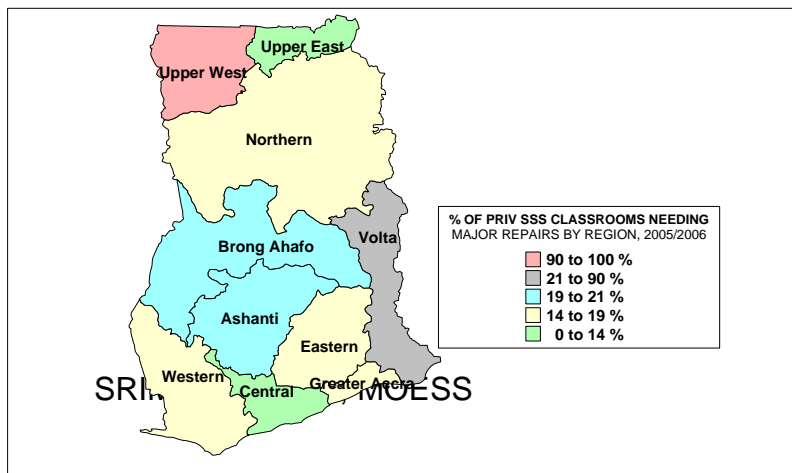


Table 3.14 Number of seating places in senior secondary schools by type of education and region, 2005/2006

REGION	NUMBER OF SEATING PLACES IN SSS								
	PUBLIC			PRIVATE			TOTAL		
	Seating Places	Enrol.	Seating Places per Student	Seating Places	Enrol.	Seating Places per Student	Seating Places	Enrol.	Seating Places per Student
Ashanti	57,328	62,141	0.92	8,244	8,089	1.02	65,572	70,230	0.93
Brong Ahafo	22,716	32,132	0.71	1,463	2,057	0.71	24,179	34,189	0.71
Central	34,828	46,090	0.76	3,090	3,351	0.92	37,918	49,441	0.77
Eastern	31,325	44,684	0.70	4,346	4,334	1.00	35,671	49,018	0.73
Greater Accra	25,896	29,224	0.89	1,741	1,702	1.02	27,637	30,926	0.89
Northern	11,875	21,294	0.56	726	1,396	0.52	12,601	22,690	0.56
Upper East	7,015	11,174	0.63	562	983	0.57	7,577	12,157	0.62
Upper West	4,902	8,088	0.61	121	121	1.00	5,023	8,209	0.61
Volta	26,529	33,822	0.78	873	853	1.02	27,402	34,675	0.79
Western	20,616	25,661	0.80	898	1,323	0.68	21,514	26,984	0.80
Total	243,030	314,310	0.77	22,064	24,209	0.91	265,094	338,519	0.78

MAP 3.14a: SEATING PLACES PER STUDENT IN PUBLIC SENIOR SECONDARY SCHOOLS BY REGION, 2005/2006

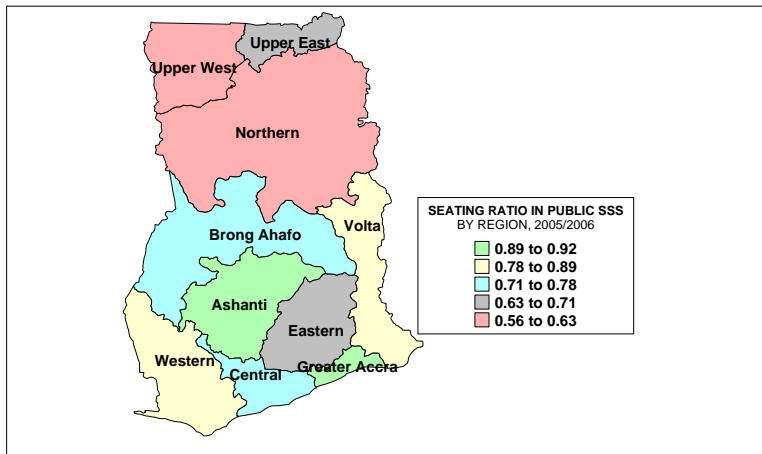
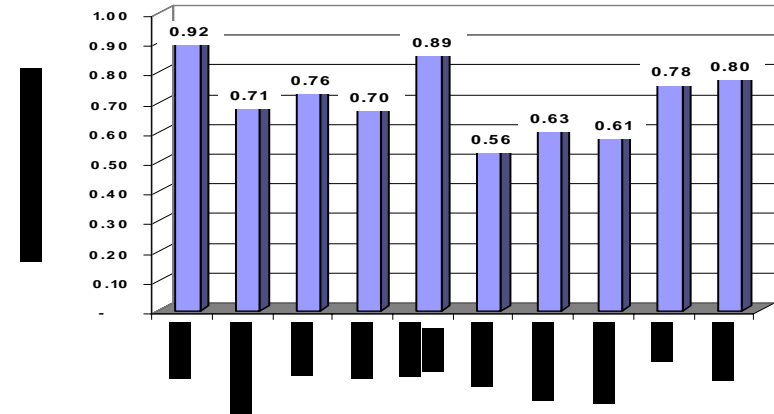


Chart 3.14a NUMBER OF SEATING PLACES IN PUBLIC SENIOR SECONDARY SCHOOLS BY REGION, 2005/2006



MAP 3.14b: SEATING PLACES PER STUDENT IN PRIVATE SENIOR SECONDARY SCHOOLS BY REGION, 2005/2006

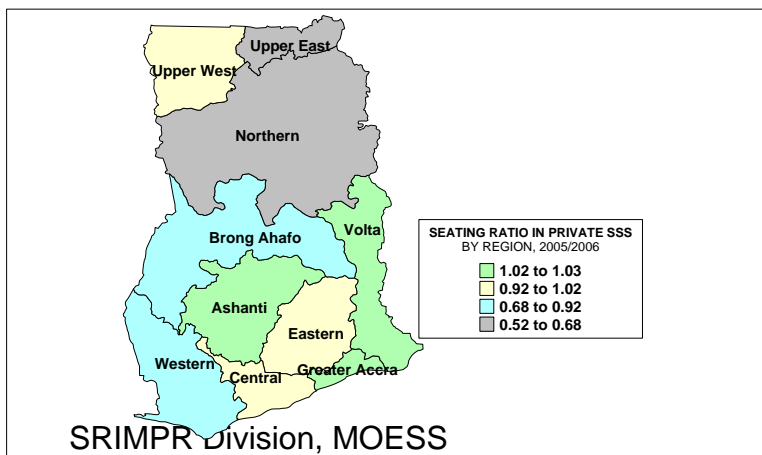


Chart 3.14b NUMBER OF SEATING PLACES IN PRIVATE SENIOR SECONDARY SCHOOLS REGION, 2005/2006

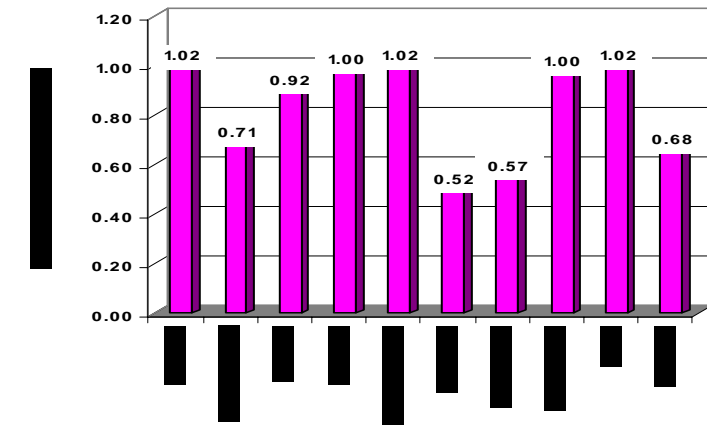


Table 3.15 Number of writing places in senior secondary schools by type of education and region, 2005/2006

REGION	NUMBER OF WRITING PLACES IN SSS								
	PUBLIC			PRIVATE			TOTAL		
	Writing Places	Enrol.	Writing Places per Student	Writing Places	Enrol.	Writing Places per Student	Writing Places	Enrol.	Writing Places per Student
Ashanti	39,735	62,141	0.64	7,816	8,089	0.97	47,551	70,230	0.68
Brong Ahafo	18,307	32,132	0.57	1,373	2,057	0.67	19,680	34,189	0.58
Central	29,995	46,090	0.65	2,773	3,351	0.83	32,768	49,441	0.66
Eastern	26,246	44,684	0.59	3,514	4,334	0.81	29,760	49,018	0.61
Greater Accra	20,973	29,224	0.72	1,741	1,702	1.02	22,714	30,926	0.73
Northern	12,745	21,294	0.60	726	1,396	0.52	13,471	22,690	0.59
Upper East	7,015	11,174	0.63	562	983	0.57	7,577	12,157	0.62
Upper West	2,364	8,088	0.29	121	121	1.00	2,485	8,209	0.30
Volta	20,900	33,822	0.62	720	853	0.84	21,620	34,675	0.62
Western	14,972	25,661	0.58	898	1,323	0.68	15,870	26,984	0.59
Total	193,252	314,310	0.61	20,244	24,209	0.84	213,496	338,519	0.63

MAP3.15a: WRITING PLACES PER STUDENT IN PUBLIC SENIOR SECONDARY SCHOOLS BY REGION, 2005/2006

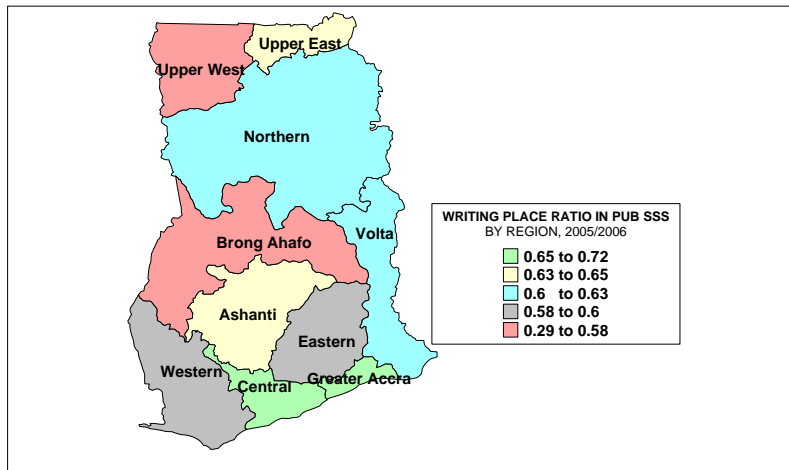
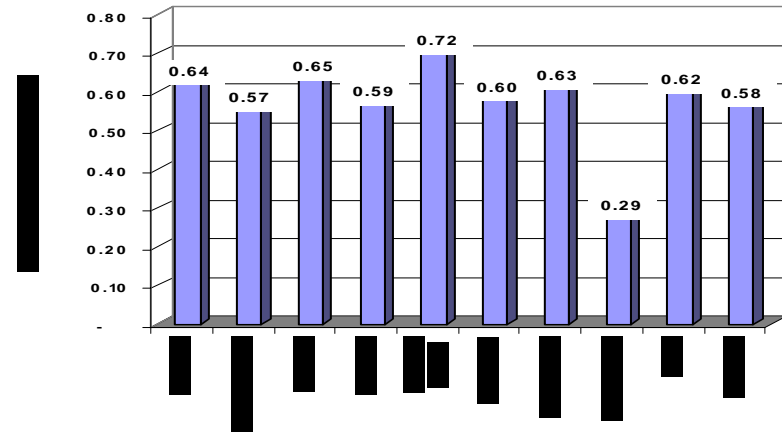


Chart 3.14a NUMBER OF WRITING PLACES IN PUBLIC SENIOR SECONDARY SCHOOLS BY REGION, 2005/2006



MAP3.15b: WRITING PLACES PER STUDENT IN PRIVATE SENIOR SECONDARY SCHOOLS BY REGION, 2005/2006

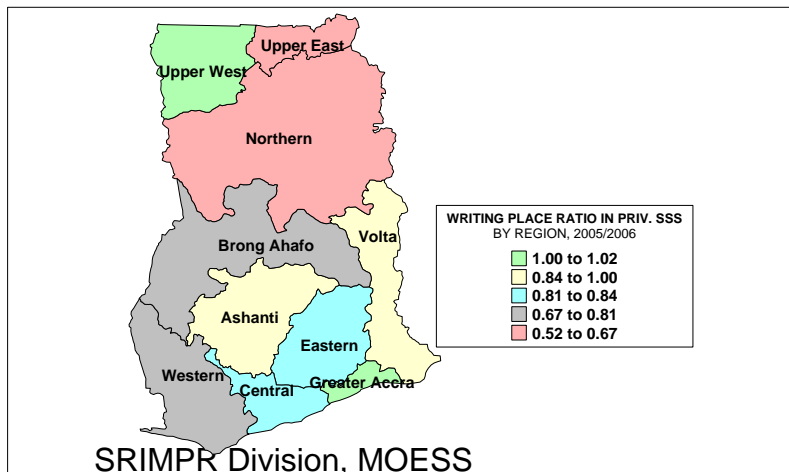


Chart 3.14b NUMBER OF WRITING PLACES IN PRIVATE SENIOR SECONDARY SCHOOLS BY REGION, 2005/2006

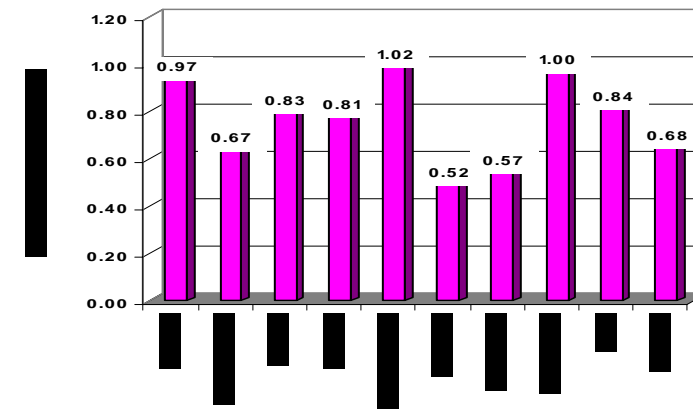


Table 3.16 Number of English textbooks in senior secondary schools by type of education and region, 2005/2006

REGION	NUMBER OF ENGLISH TEXTBOOKS IN SSS								
	PUBLIC			PRIVATE			TOTAL		
	English Textbooks	Enrol.	English Textbooks per Student	English Textbooks	Enrol.	English Textbooks per Student	English Textbooks	Enrol.	English Textbooks per Student
Ashanti	60,436	62,141	0.97	3,166	8,089	0.39	63,602	70,230	0.91
Brong Ahafo	38,447	32,132	1.20	621	2,057	0.30	39,068	34,189	1.14
Central	62,093	46,090	1.35	1,116	3,351	0.33	63,209	49,441	1.28
Eastern	48,713	44,684	1.09	2,756	4,334	0.64	51,469	49,018	1.05
Greater Accra	28,548	29,224	0.98	1,339	2,628	0.51	29,887	31,852	0.94
Northern	26,286	21,294	1.23	1,109	1,396	0.79	27,395	22,690	1.21
Upper East	12,139	11,174	1.09	1,350	983	1.37	13,489	12,157	1.11
Upper West	7,174	8,088	0.89	-	121	-	7,174	8,209	0.87
Volta	44,616	33,822	1.32	366	853	0.43	44,982	34,675	1.30
Western	26,234	25,661	1.02	60	1,323	0.05	26,294	26,984	0.97
Total	354,686	314,310	1.13	11,883	25,135	0.47	366,569	339,445	1.08

MAP 3.16a: ENGLISH TEXTBOOKS PER STUDENT IN PUBLIC SENIOR SECONDARY SCHOOLS BY REGION, 2005/2006

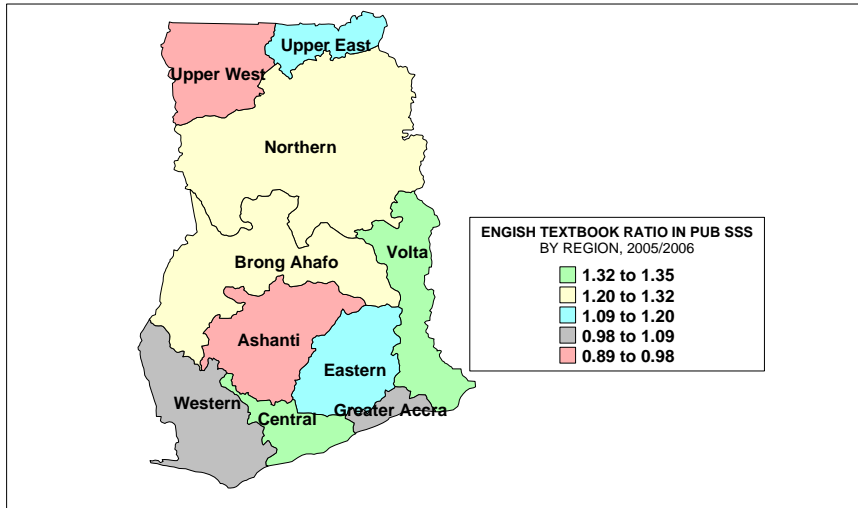
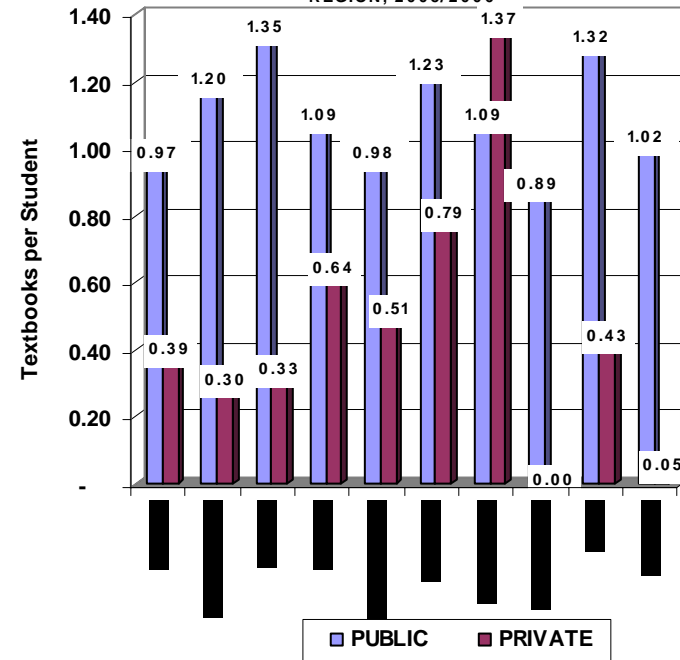


Chart 3.16 NUMBER OF ENGLISH TEXTBOOKS PER STUDENT IN SENIOR SECONDARY SCHOOLS BY TYPE OF EDUCATION AND REGION, 2005/2006



MAP 3.16b: ENGLISH TEXTBOOKS PER STUDENT IN PRIVATE SENIOR SECONDARY SCHOOLS BY REGION, 2005/2006

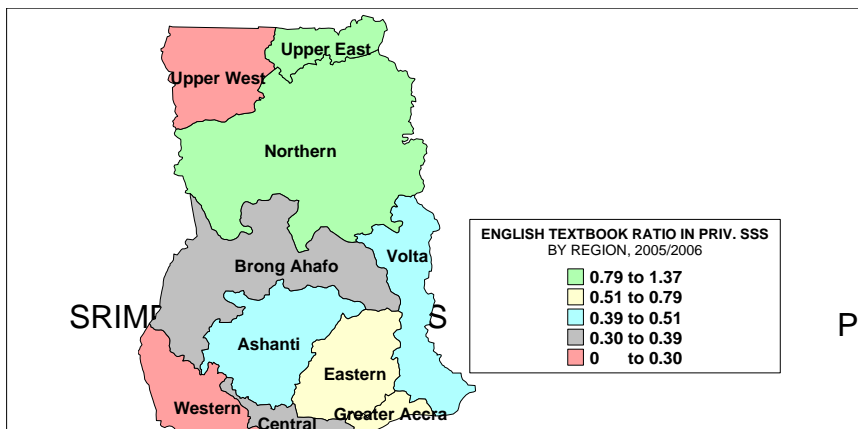


Table 3.17 Number of Maths textbooks in senior secondary schools by type of education and region, 2005/2006

REGION	NUMBER OF MATHS TEXTBOOKS IN SSS								
	PUBLIC			PRIVATE			TOTAL		
	Maths Textbooks	Enrol.	Maths Textbooks per Student	Maths Textbooks	Enrol.	Maths Textbooks per Student	Maths Textbooks	Enrol.	Maths Textbooks per Student
Ashanti	61,842	62,141	1.00	3,089	8,089	0.38	64,931	70,230	0.92
Brong Ahafo	44,624	32,132	1.39	340	2,057	0.17	44,964	34,189	1.32
Central	63,286	46,090	1.37	795	3,351	0.24	64,081	49,441	1.30
Eastern	46,894	44,684	1.05	2,595	4,334	0.60	49,489	49,018	1.01
Greater Accra	30,667	29,224	1.05	1,342	1,702	0.79	32,839	31,852	1.03
Northern	32,803	21,294	1.54	993	1,396	0.71	33,796	22,690	1.49
Upper East	12,663	11,174	1.13	1,236	983	1.26	13,899	12,157	1.14
Upper West	8,452	8,088	1.05	-	121	-	8,452	8,209	1.03
Volta	43,712	33,822	1.29	344	853	0.40	44,056	34,675	1.27
Western	24,379	25,661	0.95	20	1,323	0.02	24,399	26,984	0.90
Total	369,322	314,310	1.18	10,754	24,209	0.44	380,076	338,519	1.12

MAP 3.17a: MATHEMATICS TEXTBOOKS PER STUDENT IN PUBLIC SENIOR SECONDARY SCHOOLS BY REGION, 2005/2006

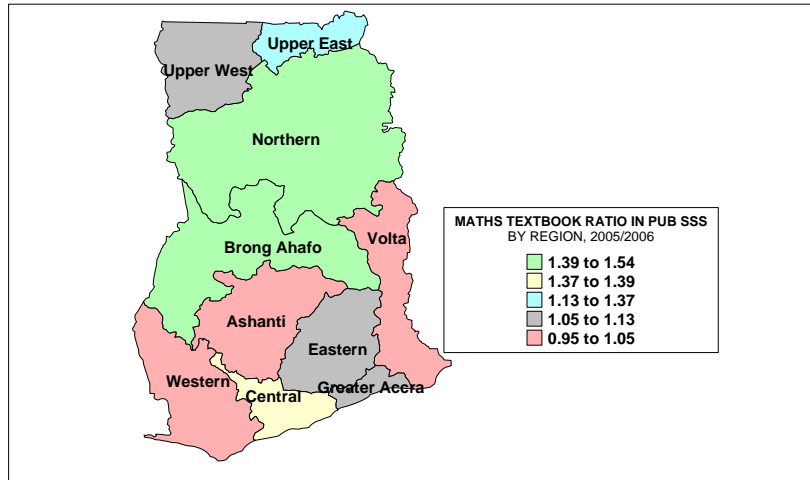
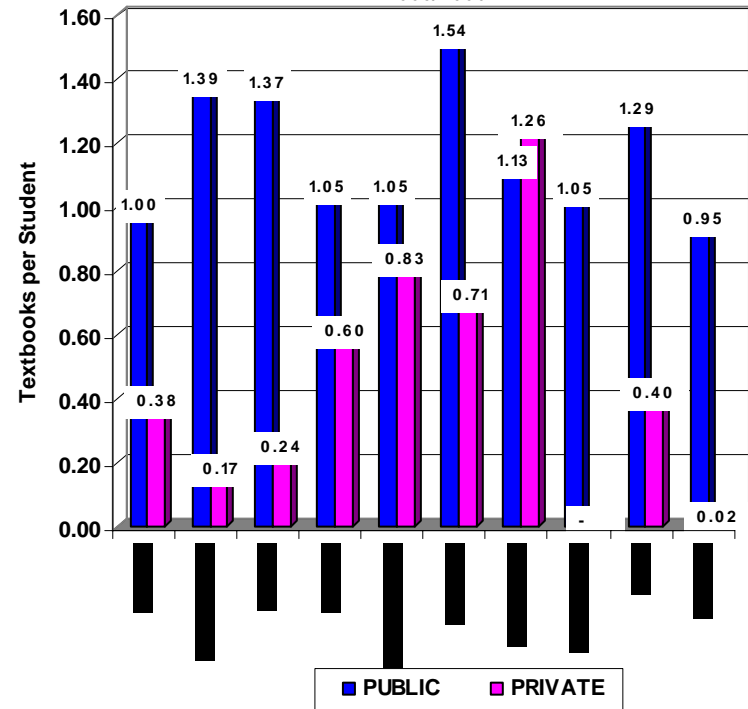


Chart 3.17 NUMBER OF MATHEMATICS TEXTBOOKS PER STUDENT IN SENIOR SECONDARY SCHOOLS BY TYPE OF EDUCATION AND REGION, 2005/2006



MAP 3.17b: MATHEMATICS TEXTBOOKS PER STUDENT IN PRIVATE SENIOR SECONDARY SCHOOLS BY REGION, 2005/2006

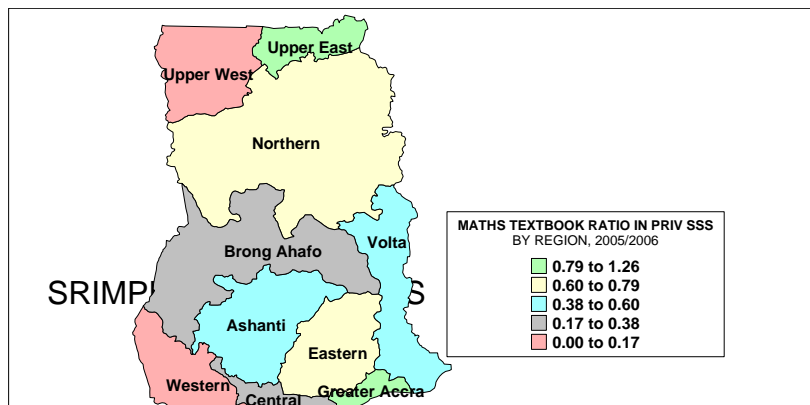


Table 3.18 Number of Science textbooks in senior secondary schools by type of education and region, 2005/2006

REGION	NUMBER OF SCIENCE TEXTBOOKS IN SSS								
	PUBLIC			PRIVATE			TOTAL		
	Science Textbooks	Enrol.	Science Textbooks per Student	Science Textbooks	Enrol.	Science Textbooks per Student	Science Textbooks	Enrol.	Science Textbooks per Student
Ashanti	40,550	62,141	0.65	1,114	8,089	0.14	41,664	70,230	0.59
Brong Ahafo	18,038	32,132	0.56	73	2,057	0.04	18,111	34,189	0.53
Central	29,506	46,090	0.64	198	3,351	0.06	29,704	49,441	0.60
Eastern	24,491	44,684	0.55	1,643	4,334	0.38	26,134	49,018	0.53
Greater Accra	22,481	29,224	0.77	930	1,702	0.55	23,411	30,926	0.76
Northern	15,933	21,294	0.75	822	1,396	0.59	16,755	22,690	0.74
Upper East	7,663	11,174	0.69	177	983	0.18	7,840	12,157	0.64
Upper West	5,762	8,088	0.71	-	121	-	5,762	8,209	0.70
Volta	20,083	33,822	0.59	233	853	0.27	20,316	34,675	0.59
Western	13,577	25,661	0.53	20	1,323	0.02	13,597	26,984	0.50
Total	198,084	314,310	0.63	5,210	24,209	0.22	203,294	338,519	0.60

MAP 3.18a: SCIENCE TEXTBOOKS PER STUDENT IN PUBLIC SENIOR SECONDARY SCHOOLS BY REGION, 2005/2006

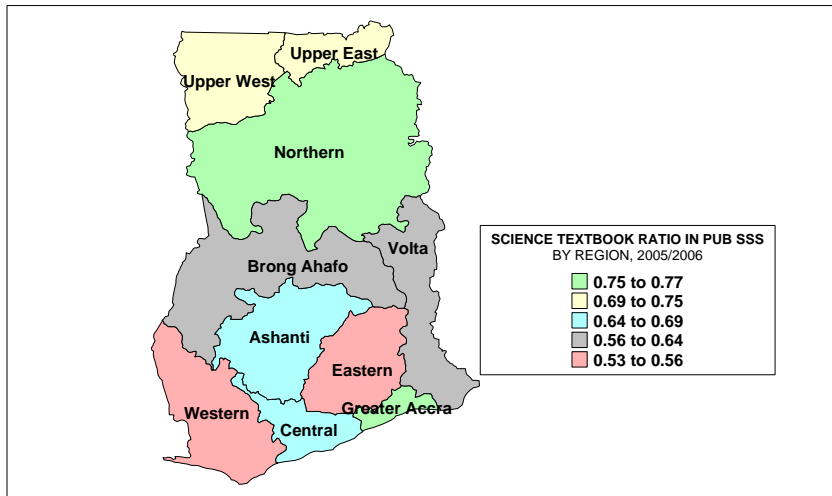
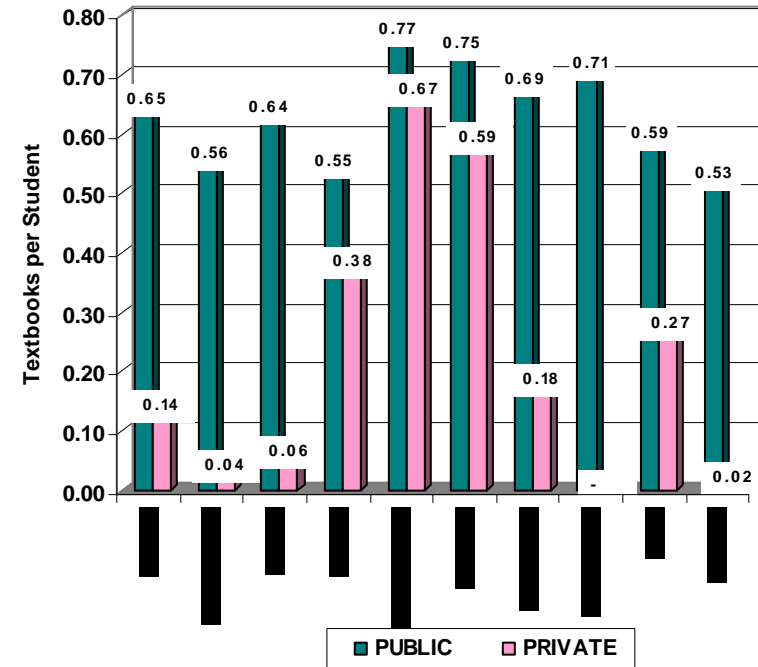


Chart 3.18 NUMBER OF SCIENCE TEXTBOOKS PER STUDENT IN SENIOR SECONDARY SCHOOLS BY TYPE OF EDUCATION AND REGION, 2005/2006



MAP 3.18b: SCIENCE TEXTBOOKS PER STUDENT IN PRIVATE SENIOR SECONDARY SCHOOLS BY REGION, 2005/2006

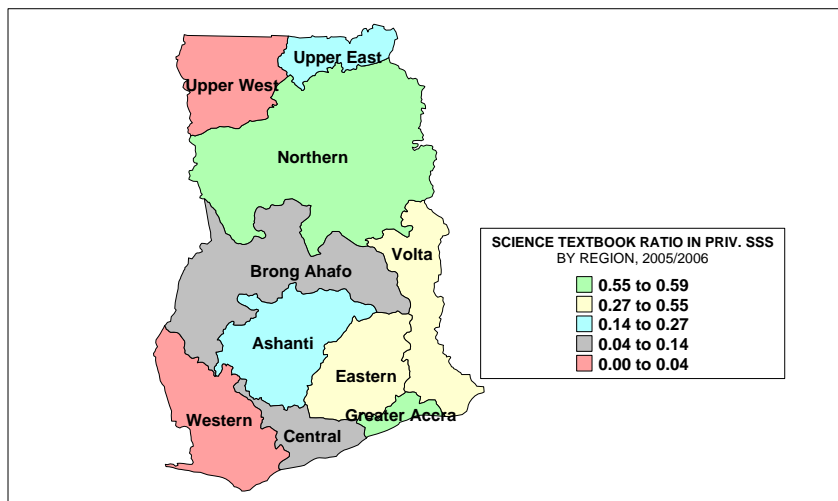
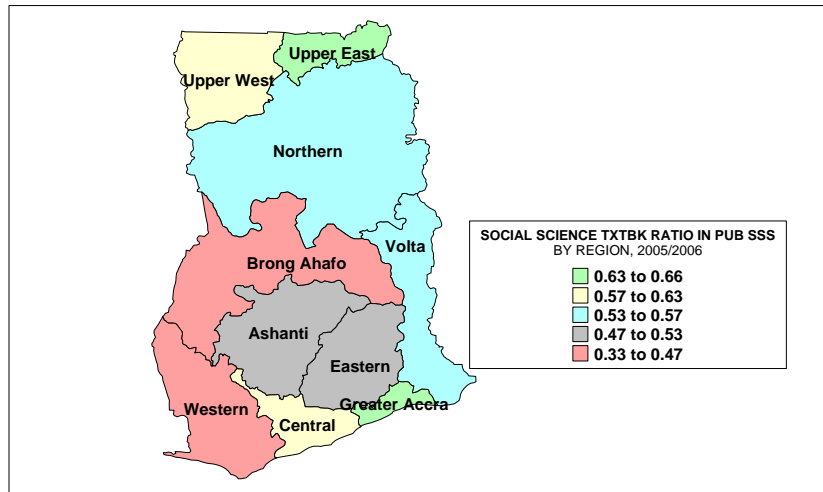


Table 3.19 Number of Social Studies textbooks in senior secondary schools by type of education and region, 2005/2006

REGION	NUMBER OF SOCIAL STUDIES TEXTBOOKS IN SSS								
	PUBLIC			PRIVATE			TOTAL		
	Social Studies Textbooks	Enrol.	Social Studies Textbooks per Student	Social Studies Textbooks	Enrol.	Social Studies Textbooks per Student	Social Studies Textbooks	Enrol.	Social Studies Textbooks per Student
Ashanti	29,370	62,141	0.47	1,344	8,089	0.17	30,714	70,230	0.44
Brong Ahafo	13,105	32,132	0.41	100	2,057	0.05	13,205	34,189	0.39
Central	26,077	46,090	0.57	418	3,351	0.12	26,495	49,441	0.54
Eastern	21,832	44,684	0.49	641	4,334	0.15	22,473	49,018	0.46
Greater Accra	19,360	29,224	0.66	1,103	1,702	0.65	20,463	30,926	0.66
Northern	11,411	21,294	0.54	798	1,396	0.57	12,209	22,690	0.54
Upper East	7,011	11,174	0.63	803	983	0.82	7,814	12,157	0.64
Upper West	4,655	8,088	0.58	-	121	-	4,655	8,209	0.57
Volta	17,972	33,822	0.53	210	853	0.25	18,182	34,675	0.52
Western	8,567	25,661	0.33	20	1,323	0.02	8,587	26,984	0.32
Total	159,360	314,310	0.51	5,437	24,209	0.22	164,797	338,519	0.49

MAP 1.19a: SOCIAL SCIENCE TEXTBOOK PER STUDENT IN PUBLIC SENIOR SECONDARY SCHOOLS BY REGION, 2005/2006



MAP 1.19b: SOCIAL SCIENCE TEXTBOOK PER STUDENT IN PRIVATE SENIOR SECONDARY SCHOOLS BY REGION, 2005/2006

